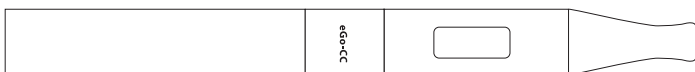


### Notice for Use

Thank for choosing Joyetech products! Please read this manual carefully before use to ensure that your usage is correct. If you require additional information or have questions about the product or its use, please consult your local Joyetech agent, or visit our website at [www.joyetech.com](http://www.joyetech.com).



### Product Introduction

To some extent, eGo-CC is an updated eGo-C, which has a clearomizer, lasting the characteristic of simple but delicate. The transparent window is the highlight of eGo-CC, from where, the liquid volume is very clear, so that you can refill the liquid in time. And the upper air inlet allows the air inflow from upside and out from upside as well, reducing the risk of leakage at the bottom. The atomizer head of eGo-CC is also changeable, just as the classic eGo-C product. It can compatible with all the batteries of eGo series.

### Standard Configuration

- 2× eGo-CC Mouthpiece
- 2× eGo-CC Atomizer Head
- 1× eGo-CC Body
- 1× eGo Series Battery
- 1× USB Cable Charger
- 1× Wall Adapter

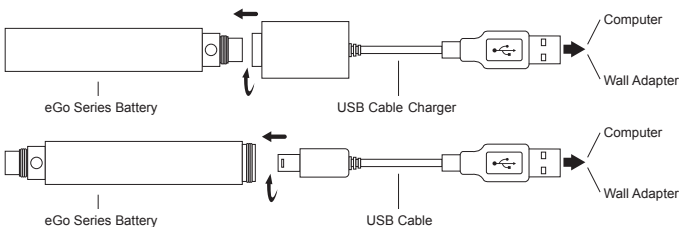
### How to Use

1. Thread the battery and atomizer together. Do not over tighten.
2. Unlock the battery (eGo battery does not have this function). Since the eGo series batteries are locked when shipped to customers, you need to press the button 5 times quickly to unlock it.
3. Inhale the mouthpiece while pressing the button on the battery and enjoy the vapor.

### How to Charge

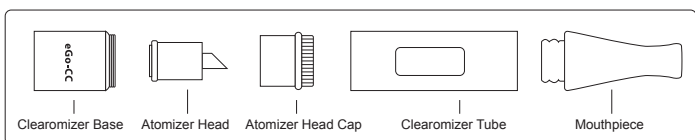
Standard battery: Screw the threaded side of the battery to the USB charger and then connect the USB port to the wall adapter or the computer. The LED on the USB charger is red while charging and will turn green when charge is complete.

USB battery: Connect the small side of the USB cable to the corresponding port of the battery, and the USB port to the wall adapter or the computer.



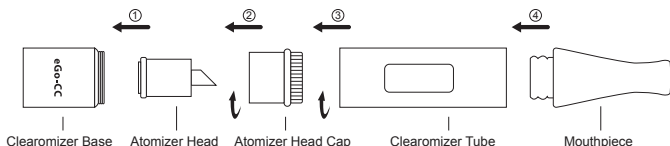
### Standard Configuration (eGo-CC Clearomizer Part)

- 1× Mouthpiece
- 1× Clearomizer Tube
- 1× Clearomizer Base
- 1× Atomizer Head Cap
- 1× Atomizer Head



### How to Assemble (eGo-CC Clearatomizer Part)

Firstly, screw the atomizer head onto the clearatomizer base; secondly, screw the atomizer head cap over the atomizer head; thirdly, screw on the clearatomizer tube; at last, the mouthpiece.

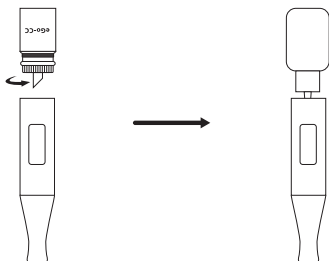


### How to Replace the Atomizer Head (eGo-CC Clearatomizer Part)

Unscrew the clearatomizer till the base is loosened, then pull it out. Please do not over screw it. And then unscrew the atomizer head cap. Simple pull the atomizer out and assemble with a new one. At last, screw the cap and base again to finish replacing.

### How to Add Liquid (eGo-CC Clearatomizer Part)

Unscrew the clearatomizer base, there is a hole in the tube, simply fill the e-juice from the hole, you can accomplish the adding of the liquid.



### Battery Part

Capacity: 650mAh, 900mAh and 1000mAh.

#### eGo/eGo-T/eGo-C Battery

eGo battery has constant output, safety protection, short circuit protection and overcharge protection. Compared to eGo battery, eGo-T is developed with switch button protection, and the eGo-C is added power display function upon eGo-T.

#### eGo-C Upgrade Battery

Two modes to switch: constant voltage output/variable voltage output.

Intensified short circuit protection discharge and overcharge protection.

#### eGo-C Twist Battery

Accurate adjustment of output voltage

Intensified short circuit protection, discharge and overcharge protection.

Switch protection, atomizer protection, low voltage protection.

### Precautions

1. Only have your eGo-CC repaired by Joyetech. Do not attempt to repair the unit by yourself as damage or personal injury may occur.
2. Do not leave the eGo-CC in high temperatures or damp conditions, otherwise it may be damaged. The appropriate operation temperature is within 0°C to 45°C while charging and -10°C to 60°C while using.
3. Do not attempt to combine the eGo-CC with parts from other brands of e-cigarettes. If it is damaged in this way, Joyetech will not take responsibility and your warranty will be void.

### Warranty

Please consult your Joyetech product warranty card. We are not responsible for any damages caused by human error. Our warranty is not available for products purchased from third party vendors.

**Joyetech (Shenzhen) Electronics Co., Ltd.**

Email: info@joyetech.com

Web: www.joyetech.com

