

eGo-CC Manual



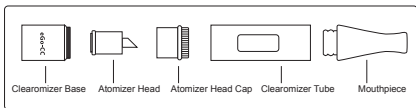
eGo-CC is the first generation of clear atomizer of Joyetech. The transparent window is the highlight of eGo-CC, from where, the liquid volume is very clear, so that you can refill the liquid in time. And the upper air inlet allows the air inflow from upside and out from upside as well, eliminating the risk of leakage at the bottom. The atomizer head of eGo-CC is also changeable, just as the classic eGo-C product. It can compatible with all the batteries of eGo series.

Notice for Use

Thank for choosing Joyetech products! Please read this manual carefully before use to ensure that your usage is correct. If you require additional information or have questions about the product or its use, please consult your local Joyetech agent, or visit our website at www.joyetech.com.

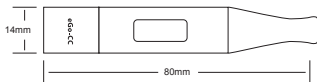
Standard configuration

- 1× Mouthpiece
- 1× Clearomizer Tube
- 1× Clearomizer Base
- 1× Atomizer Head Cap
- 1× Atomizer Head



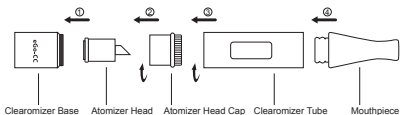
Product Parameters

- Diameter: 14mm
- Length: 80mm (including mouthpiece)
- Liquid volume: 1.32ml



How to assemble

Firstly, screw the atomizer head onto the eGo-CC base; secondly, screw the atomizer head cap over the atomizer head; thirdly, screw on the clear atomizer tube; at last, the mouthpiece.

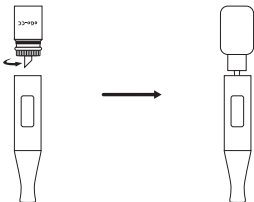


How to replace the atomizer head

Unscrew the clearomizer till the base is loosened, and then pull it out. Please do not over screw it. And then unscrew the atomizer head cap. Simple pull the atomizer out and assemble with a new one. At last, screw the cap and base again to finish replacing.

How to add liquid

Pull the mouthpiece out, there is a hole in the atomizer tube, simply fill the e-juice from the hole, you can accomplish the adding of the liquid.



Precautions

1. Only have your eGo-CC repaired by Joyetech. Do not attempt to repair the unit by yourself as damage or personal injury may occur.
2. Do not leave the eGo-CC in high temperatures or damp conditions, otherwise it may be damaged. The appropriate operation temperature is within 0℃ to 45℃ while charging and -10℃ to 60℃ while using.
3. Do not attempt to combine the eGo-CC with parts from other brands of e-cigarettes. If it is damaged in this way, Joyetech will not take responsibility and your warranty will be void.

Warranty

Please consult your Joyetech product warranty card. We are not responsible for any damages caused by human error. Our warranty is not available for products purchased from third party vendors.

Joyetech (Shenzhen) Electronics Co., Ltd.

Email: info@joyetech.com

Web: www.joyetech.com

